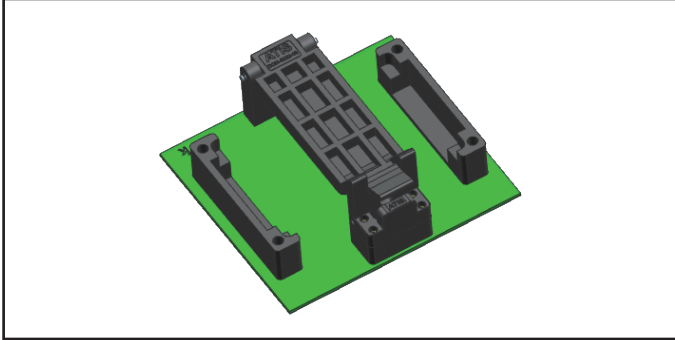


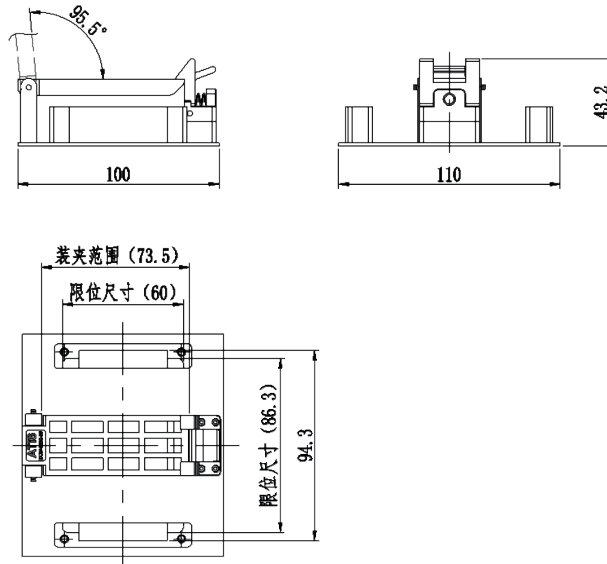
DCM SURFACE MOUNTED DEVICES

DCM-8232-03-K



- 材质/Material
主体/Body: PPS+gf30 (Black)
- 电特性/Electrical Characteristics
- 其他/Others
使用温度/Operating Temperature Range: -55°C~+175°C
抗疲劳/Anti-Fatigue: 50000 cycle (因测试条件不同结果可能不同/Results may vary depending on test conditions)

产品尺寸/Product Dimensions: (长宽高/LWH, 关键封装尺寸/Critical Package Sizes, 引脚尺寸/Pin Size)



器件封装要求含/Device Packaging Requirements Including

